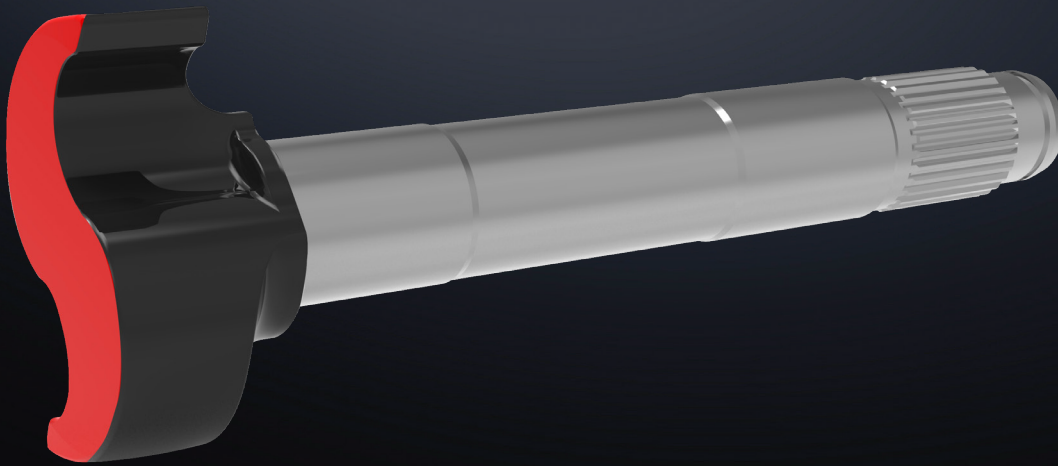


# VALUE AND RELIABILITY

MERITOR® RED CAMSHAFTS



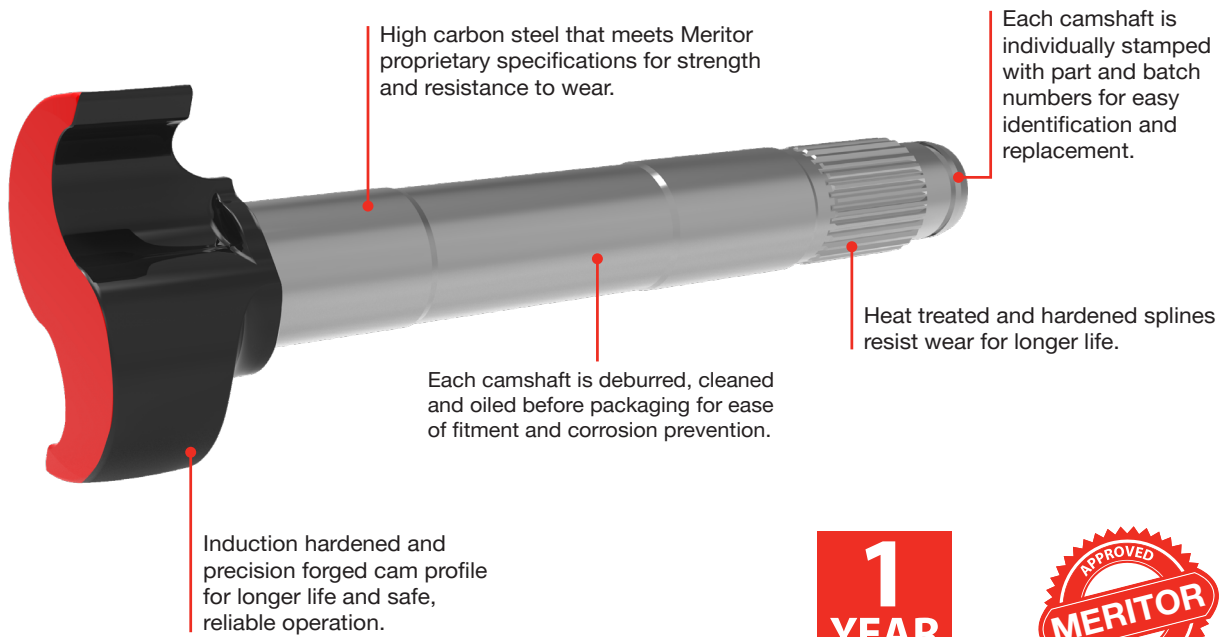
**Meritor**

**FOR  
A WORLD  
THAT'S  
ALWAYS ON™**

# MERITOR RED CAMSHAFTS




Meritor Red Camshafts are a quality aftermarket range of the most popular S-camshafts to suit commercial vehicle drum brake applications. Produced using the same exacting processes as our genuine camshafts, they represent excellent value for money while still delivering the quality and reliability you expect.

## FEATURES AND BENEFITS

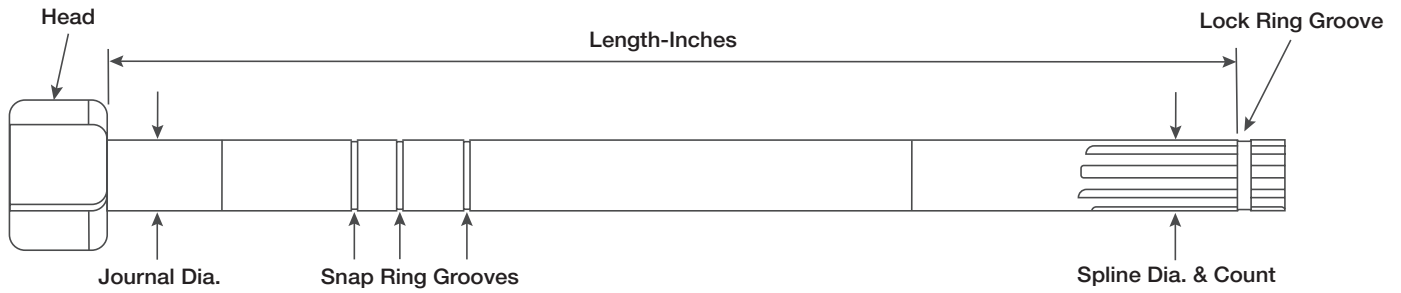


## MERITOR CAMSHAFT REPAIR KITS

Meritor offers a range of camshaft repair kits to suit a variety of applications. When replacing a camshaft it is always a good idea to replace the seals and bushings as well.

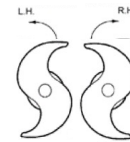
CAMSHAFT REPAIR KIT NUMBER	CONTAINS	BRAKE TYPE & SIZE	NOTES
KIT8042	 Moly impregnated nylon bushing and seals, circlips and washers	Meritor 15" or 16.5" Q and Q+ Services 2 x wheel ends	Meritor Genuine branded
KIT8042SBAU	 Bronze bushing and seals, circlips and washers	Meritor 15" or 16.5" Q and Q+ Services 2 x wheel ends	Meritor branded. For heavy duty applications
E-3993B	 Moly impregnated nylon bushing, seals, circlips and washers	Meritor 15" or 16.5" Q and Q+ Services 2 x wheel ends	Euclid branded

# CAMSHAFT IDENTIFICATION



- Length:** Measure from under the cam shaft head to the first lock ring groove. (If two lock ring grooves, measure from the groove closest to the head)
- Spline and count:** Measure the spline diameter and count the number of splines.
- Journal:** Measure the camshaft journal diameter.
- Brake size:** Confirm brake manufacture and size

- View from Head** Determine left hand (LH) or right hand (RH) cam head rotation.  
**NOTE:** LH and RH indicates only the direction of cam rotation; NOT which side of the vehicle the cam is used on.  
 (LH = Counterclockwise)  
 (RH = Clockwise)
- Axle:** Confirm Axle location (Steer, Drive, Trailer)



# MERITOR RED CAMSHAFT SPECIFICATIONS

								CROSS REFERENCE			
PART NUMBER	LENGTH	SPLINE SIZE	JOURNAL DIA.	HEAD END	AXLE	CAMSHAFT REPAIR KIT	MFR./ BRAKE SIZE	MERITOR GENUINE PART NO.	ATAP	EUCLID	WATTS
MCS7537	11-9/16"	1-1/2"x 28	1-1/2"	LH	DRIVE	KIT8042, E-3993B, KIT8042SBAU	Meritor 16-1/2" Q+	2210W7537	BP2033	E-9661	WT2033
MCS7536	11-9/16"	1-1/2"x 28	1-1/2"	RH	DRIVE	KIT8042, E-3993B, KIT8042SBAU	Meritor 16-1/2" Q+	2210V7536	BP2034	E-9662	WT2034
MCS7453	9-5/16"	1-1/2"x 28	1-1/2"	LH	DRIVE	KIT8042, E-3993B, KIT8042SBAU	Meritor 16-1/2" Q+	2210Q7453	BP2097	E-11961	WT2306
MCS7452	9-5/16"	1-1/2"x 28	1-1/2"	RH	DRIVE	KIT8042, E-3993B, KIT8042SBAU	Meritor 16-1/2" Q+	2210P7452	BP2098	E-11960	WT2307
MCS7645	14-19/32"	1-1/2"x 28	1-1/2"	LH	DRIVE	KIT8042, E-3993B, KIT8042SBAU	Meritor 16-1/2" Q+	2210A7645	BP2099	E-9677	WT2318
MCS7644	14-19/32"	1-1/2"x 28	1-1/2"	RH	DRIVE	KIT8042, E-3993B, KIT8042SBAU	Meritor 16-1/2" Q+	2210Z7644	BP2100	E-9678	WT2319
MCS7661	14-61/64"	1-1/2"x 28	1-1/2"	LH	DRIVE	KIT8042, E-3993B, KIT8042SBAU	Meritor 16-1/2" Q+	2210Q7661	BP2065	E-11577	WT2322
MCS7660	14-61/64"	1-1/2"x 28	1-1/2"	RH	DRIVE	KIT8042, E-3993B, KIT8042SBAU	Meritor 16-1/2" Q+	2210P7660	BP2066	E-11576	WT2323
MCS7671	15-3/16"	1-1/2"x 28	1-1/2"	LH	DRIVE	KIT8042, E-3993B, KIT8042SBAU	Meritor 16-1/2" Q+	2210A7671	BP2059	E-9681	WT2324
MCS7670	15-3/16"	1-1/2"x 28	1-1/2"	RH	DRIVE	KIT8042, E-3993B, KIT8042SBAU	Meritor 16-1/2" Q+	2210Z7670	BP2060	E-9682	WT2325
MCS7552	11-15/16"	1-1/2"x 28	1-1/2"	LH	DRIVE	KIT8042, E-3993B, KIT8042SBAU	Meritor 16-1/2" Q+	2210L7552	BP2069	E-9665	WT2314
MCS7551	11-15/16"	1-1/2"x 28	1-1/2"	RH	DRIVE	KIT8042, E-3993B, KIT8042SBAU	Meritor 16-1/2" Q+	2210K7551	BP2070	E-9666	WT2315
MCS7680	15-7/16"	1-1/2"x 28	1-49/64"	LH	DRIVE	KIT8042, E-3993B, KIT8042SBAU	Meritor 16-1/2" Q+	2210J7680	N/A	E-11963	N/A
MCS7678	15-7/16"	1-1/2"x 28	1-49/64"	RH	DRIVE	KIT8042, E-3993B, KIT8042SBAU	Meritor 16-1/2" Q+	2210H7678	N/A	E-11962	N/A

MCS = Meritor Camshaft



Meritor Heavy Vehicle Systems Australia  
50 Calarco Drive  
Derrimut, VIC 3026  
AUSTRALIA

(03) 8353 6050

[meritorpartsexpress.com](http://meritorpartsexpress.com)

CMFL151 - MERITOR RED CAMSHAFTS 01/24  
Produced in AUS 01/24  
©2024 Cummins Inc.